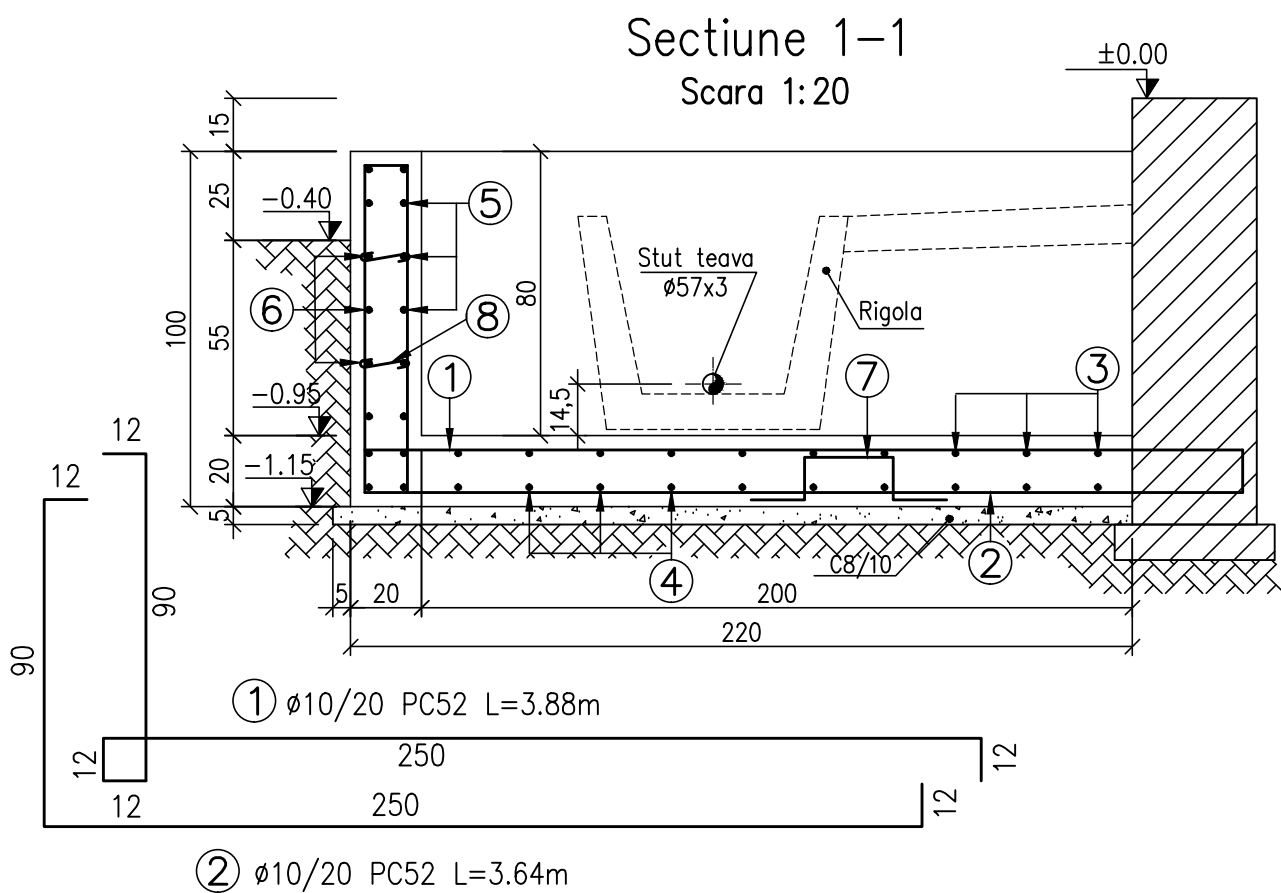
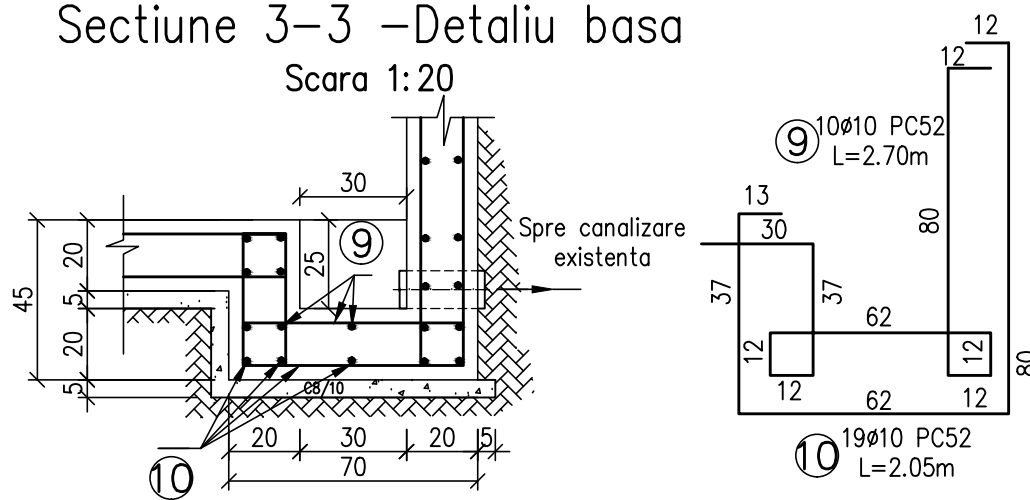


NOTA
DESENUL DE CUVA SE VA EXECUTA DOAR
DACA BENEFICIARUL VA SOLICITA INLOCUIREA
CELEI EXISTENTE IN STATIE

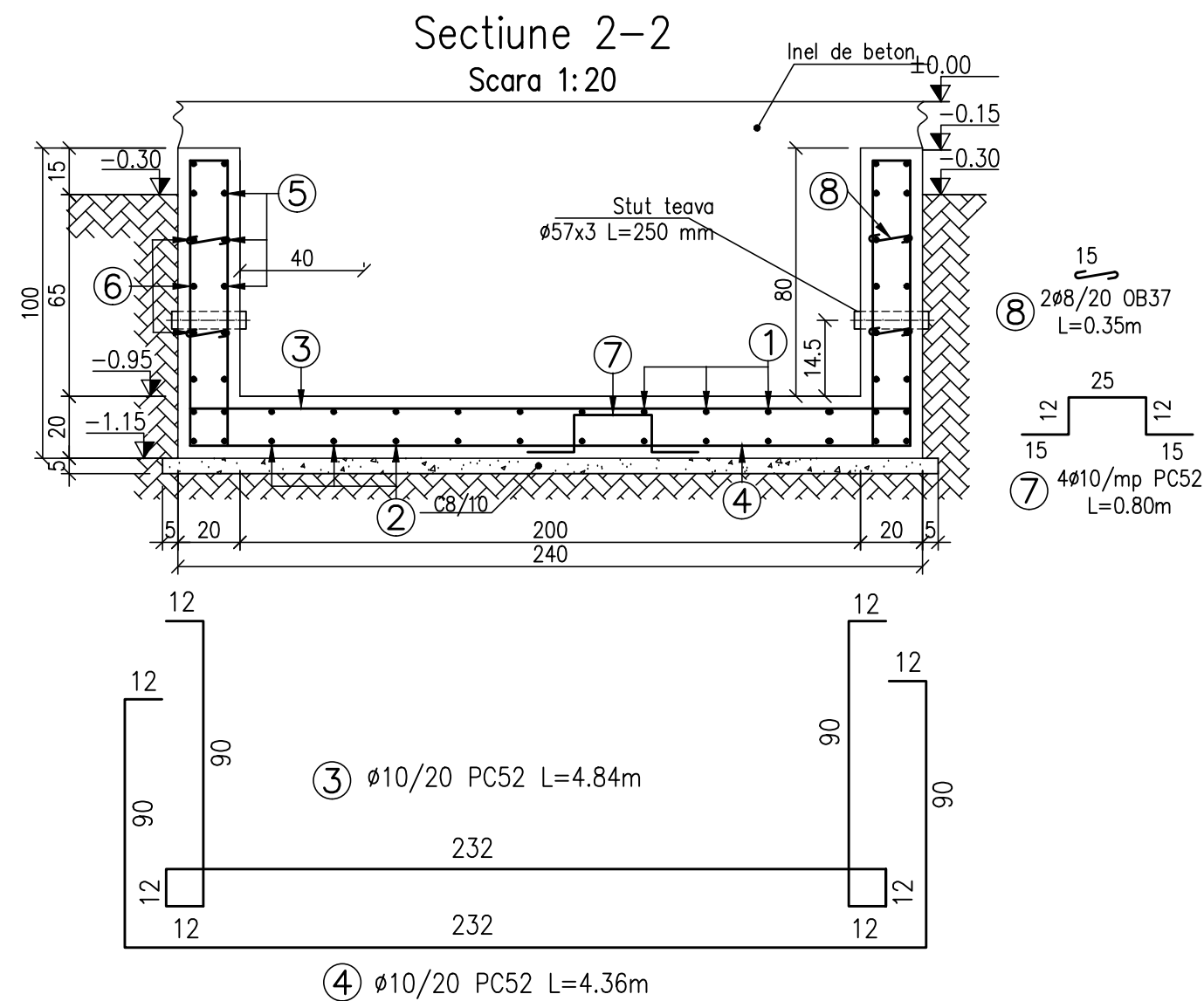


Sectioniune 3-3 -Detaliu basa
Scara 1:20



- Agregate naturale de masa volumetrica normala conf. SR EN 12620:2003
- Apa de amestec conf. SR EN 1008:2003
- Otel beton OB37 si PC52 conf. STAS438/1-89 si ST 009-05

CARACTERISTICI MATERIALE	
Beton de egalizare	C8/10
Beton armat	C30/37











EXTRAS DE ARMATURA

Marca	Diametrul	Nr.bare elemente		Lungimi in m a unei bare	L/Ø	
		Intr-un element	In toate elementele		OB37 Ø8	PC52 Ø10
1	10	14	14	3.88		54.3
2	10	14	14	3.64		51.0
3	10	12	12	4.84		58.1
4	10	12	12	4.36		52.3
5	10	6	6	8.78		52.7
6	10	6	6	8.30		49.8
7	10	16	16	0.80		12.8
8	8	60	60	0.30	18.0	
9	10	10	10	2.70		27.0
10	10	10	10	2.05		20.5
Total lungimi pe diametru					18.0	378.5
Kg/ml					0.395	0.617
Greutate pe diametre					7.1	233.5
Greutate totala Kg					240.62	

REFERINTE:

A614-CB-01-VEDERE IN PLAN
A614-CB-02-SECTIUNE A-A
A614-CB-04-STUT TRECERE CONDUCTE
A614-U-00-ANSAMBLU REZERVOR

DOMENIUL DE EXIGENTA "A1"
CLASA DE IMPORTANTA "III"
CATEGORIA DE IMPORTANTA "C"

								
								
								
Rev.	Descriere		Data	Semnat	Rev.	Descriere	Data	Semnat
Acest document este proprietatea S.C. ELLIS'92 S.R.L. si nu va fi comunicat fara autorizare								
Intocmit		Verificat	Aprobat		Beneficiar		Denumire proiect	
Zamfir A.		Stroie B.		Ionescu A.		CONPET SA		DEZAFECTARE REZERVOR R9 TITEI (V=2889 mc) CONSTRUCTIE REZERVOR NOU PENTRU TITEI (V=2500 mc) STATIA DE POMPARE CARTOJANI
 arhitectura proiectare inginerie consultanta tehnica		 CUVA DE BETON		Nr.: A614-CB-03		Rev0		
				Scara: 1: 20; 1: 50				
				Index:A614-CB-BD				
				Material:		Masa: kg		
				Data: 04.2017		Plansa:1/1		
A2 (420x594)								